

Solitaire: Clue 2



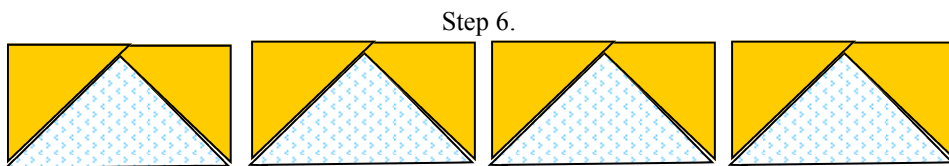
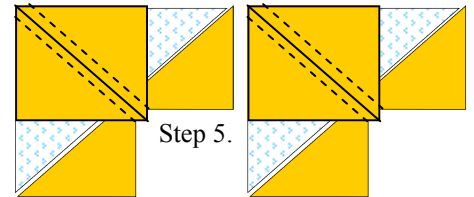
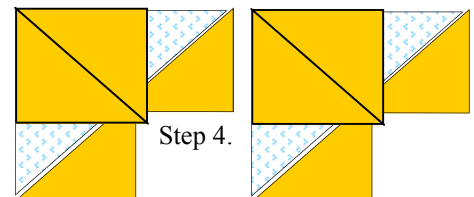
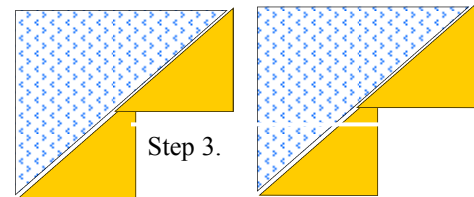
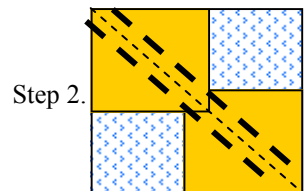
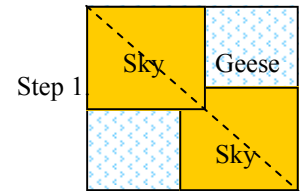
Cutting:

Set One:	Background	D	1 ea. 13 1/4" Square (Geese)
(4 Blocks)	Bright	C	4 ea. 6 7/8" Squares (Sky)
Set Two:	Dark	J	3 ea. 9 1/4" Squares (Geese)
(12 Blocks)	Background	K	12 ea. 4 7/8" Squares (Sky)

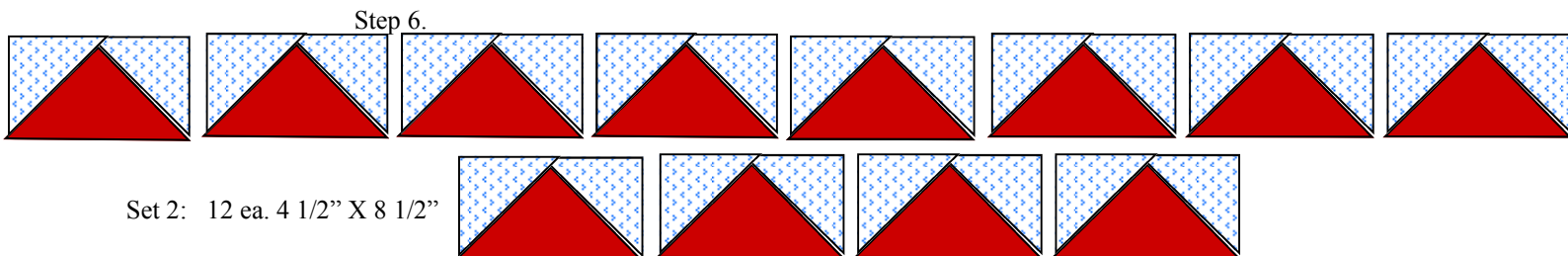
Assembly:

(We are making 2 sets of Geese. Follow assembly below for each set above.)

1. Finger press or draw one diagonal crease in each of your smaller (Sky) squares.
2. Lay two smaller (Sky) squares right sides together (RST) to the larger square so the smaller squares align with opposite corners of the larger (Goose) square as at right. Be sure diagonal creases line up as shown. Make 4, 12.
3. Stitch 1/4" on both sides of those creases. Cut on the diagonal. Now you have two odd looking sections (shown). Press to the Sky Triangles. Make 4, 12 odd looking units.
4. On each unit, lay another Sky square RST in the corner of each Goose as shown.
5. Stitch on both sides of marked diagonal. Cut on the diagonal.
6. Press to the Sky triangles and you have four Flying Geese units. Trim if necessary. Make 4, 12 Flying Geese Units.



Set 1: 4 ea. 6 1/2" X 12 1/2"



Set 2: 12 ea. 4 1/2" X 8 1/2"