

California Roll

A Jelly Roll Quilt from LynBrown.com

Supplies:

One Jelly Roll of 40 to 50 strips

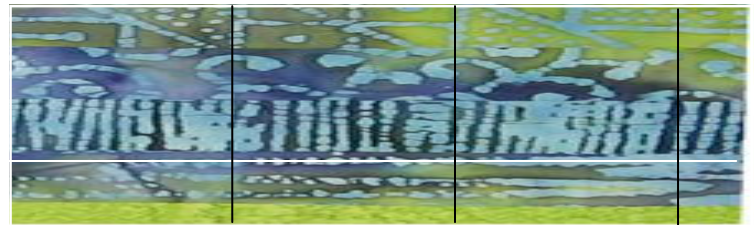
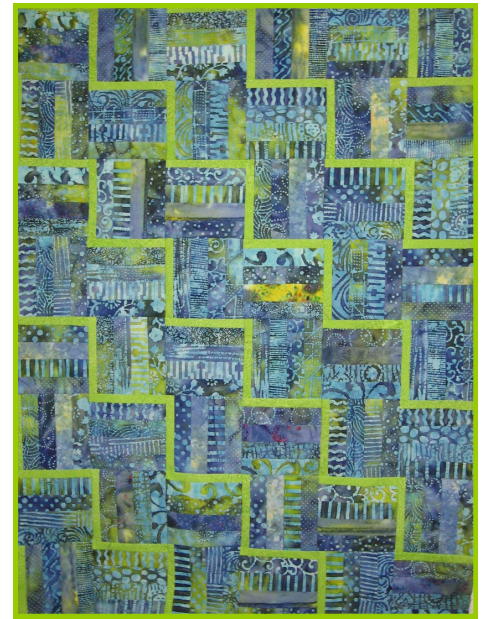
Plus 1 1/2 yards of accent fabric (slime lime green in the sample)

Cut 9 (40 pc Roll) or 12 ea. (50 pc Roll) 1 1/2" x Width of Fabric Strips of accent fabric.

Here are the basic instructions...

This quilt top literally took about 4 hours to make.

Stitch 4 random jelly (2 1/2") strips together into a strip set 8 1/2" by Width of Fabric (WoF), add a 1 1/2" green strip. Make 9 or 12 strip sets (now 9 1/2" by WoF) , depending on number of JR strips you started with.



Cut strip sets into 9 1/2" blocks. Make 35 or 36 blocks from a traditional 40 strip JR or 48 from one of those off-brand ones (they may have 50 strips with some repeats!)



Stitch the blocks together in typical rail fence style twisting every other block a 1/4 turn as shown. Make 7 rows of 5 (45" X 63"); 6 rows of 6 (54" X 54") OR 8 rows of 6 (54" X 72") . That's IT! (Another assembly option: For my 48 block quilt, I stitched the 9 1/2" blocks into sets of four like what is shown above. These Great Blocks should measure 18 1/2". You'll need 9 of these for the 54" square quilt set 3 X 3 OR 12 for the 54" X 72" quilt set 3 X 4. I would not advise using this technique for the 35 block quilt.)

I didn't even add borders, but you could if you wished. Send off to your quilter or quilt it yourself... then bind using any leftover strips and 2 1/2" strips of the accent slime lime or your border fabric.