

# PET SCREEN SACK

From [www.LynBrown.com](http://www.LynBrown.com)

## Supplies and Cutting:

**Small Size:** About 11" X 8 1/2"

Cut from Screen:

23" X 9 1/2"

Cut from Accent: (Fat Quarter)

12" X 9 1/2"

2" cotton strapping:

50" (About 1 1/2 yards)

**Large Size:** About 15" X 13 1/2"

Cut from Screen:

31" X 14 1/2"

Cut from Accent: (Fat Quarter)

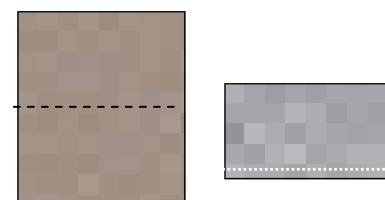
15" X 14 1/2"

2" cotton strapping:

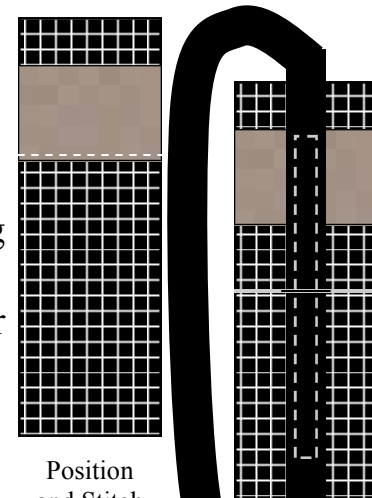
58" (About 1 3/4 yards)

## Assembly:

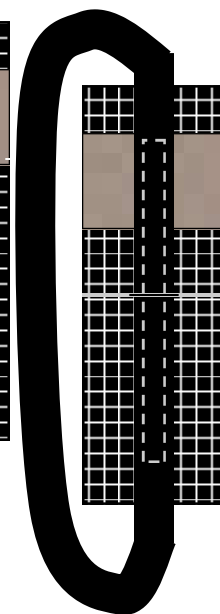
1. Fold the accent piece (Pocket) in half crosswise Right Sides Together. Stitch across the long edge. Turn. Position on the screen so folded edge is about 3" from top edge of screen and raw edges align. Pin in place. Stitch to screen along the bottom (seamed) edge. Add a second line of top stitching if desired.
2. Hem edges of Sack by turning under short edges by 3/8" and finger pressing, then turn again 1/2" and pin. Top stitch hem with matching thread.
3. Abut the short raw edges of the strapping together and stitch together securely with a zigzag stitch. Position the Strapping so the seam is in the center (what will be the bottom) of the Sack. Stitch the strapping to the Sack as shown at right.
4. Sew a concealed side seam: Fold the Screen in half as shown WRONG sides together. Stitch the side seams, catching the accent raw edges. Trim to a scant 1/4". Turn so RIGHT sides are together and stitch again with a generous 1/4" seam to conceal seam.
5. Box the bottom of Sack if desired. Fold the side seam of the Sack to align with the bottom of the Sack. A triangle develops at the bottom side seam. Stitch across the bottom of the triangle 1" to 2" from point. Repeat on other corner to form the boxy bottom of your Sack. Turn right side out.
6. Enjoy your Pet Screen Sack!



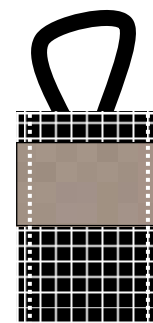
Fold and Stitch Accent (Pocket)



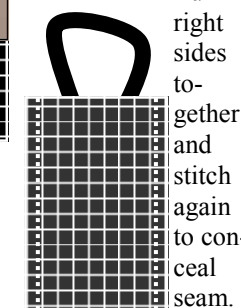
Position and Stitch Pocket



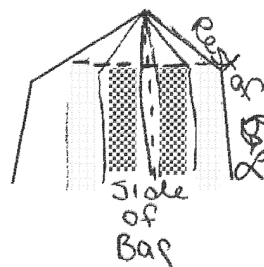
Add Strapping



Fold Wrong Sides together, stitch sides, trim seam.



Turn right sides together and stitch again to conceal seam.



Squish the side seam to the center bottom. Stitch triangle.