

Sew Spangled Mystery Quilt

From LynBrown.com

Sew Spangled Mystery Quilt

Clue 4 Flying Geese



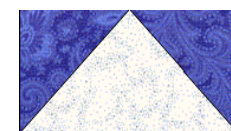
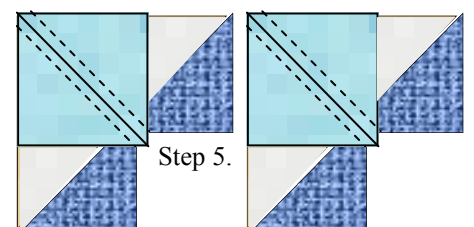
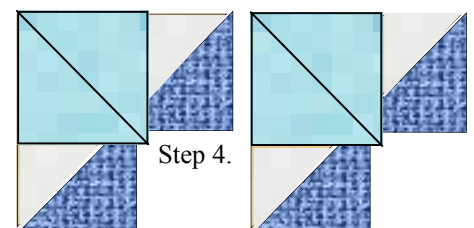
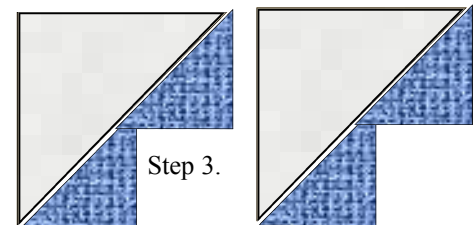
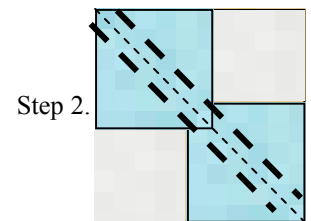
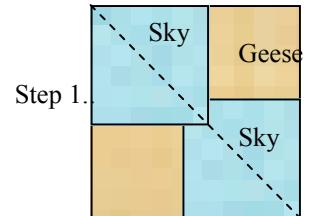
Cutting:

Color 1: 48 ea. 2 3/8" squares (SKY)

Background: 12 ea. 4 1/4" squares (GEESE)

Assembly:

1. Finger press or draw one diagonal crease in each of your smaller (Sky) squares. This will be CUTTING Line.
2. Lay two smaller (Sky) squares right sides together (RST) to the larger square so the smaller squares align with opposite corners of the larger (Geese) square as at right. Be sure diagonal creases line up as shown. Stitch 1/4" on both sides of those creases.
3. Cut on the diagonal. Now you have two odd looking sections (shown). Press to the Sky Triangles.
4. On each section, lay another Sky square RST in the corner of each Geese as shown.
5. Stitch on both sides of marked diagonal. Cut on the diagonal.
6. Press to the Sky triangles and you have four Flying Geese units. Trim if necessary.
7. Make a total of 12 sets or 48 Flying Geese Blocks to measure 2" X 3 1/2" raw.



Make 48

Check back at
www.LynBrown.com
next Tuesday August 6 for the
Fifth Clue of the
Sew Spangled Mystery.

Like LynBrown.com On Facebook to see future free patterns.