

NAUTICAL TUMBLE QUILT: BLOCK TWENTY ONE

SHIPPING LANES LOG CABIN

Use as few as five fabrics or as many as you like...

Cutting:

Light:

9 ea. A 1 1/2" squares

Medium:

9 ea. B 1 1/2" X 1 1/4"

9 ea. C 2 1/4" X 1 1/4"

9 ea. D 3" X 1 1/4"

9 ea. E 3 3/4" X 1 1/4"

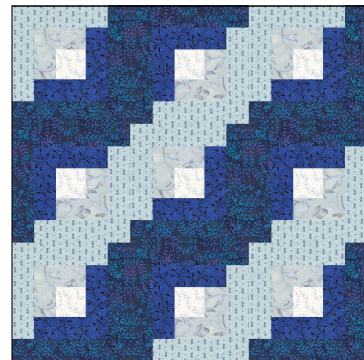
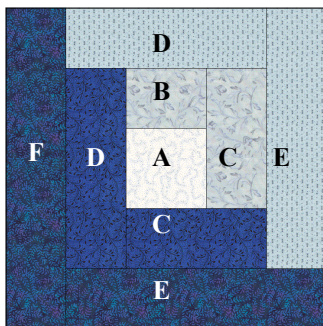
Dark:

9 ea. C 2 1/4 X 1 1/4"

9 ea. D 3" X 1 1/4"

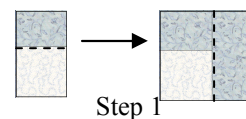
9 ea. E 3 3/4" X 1 1/4"

9 ea. F 4 1/2" X 1 1/4"

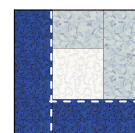


Assembly:

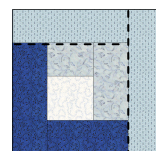
1. Stitch Light A to Medium B. Add a Medium C as shown at right.
2. Add Dark C to bottom edge of unit then add a Dark D to Left Side.
3. Continue around, adding Medium D to top then Medium E to Right Edge as shown.
4. Complete the block, stitching a Dark E to Bottom then finish with Dark F on Left. Block should measure 4 1/2".
5. Repeat Steps 1 through 4 to make 9 ea. Log Cabin Blocks.
6. Turning the middle block 180 degrees, stitch three blocks together as shown to make Row A. Make 2 Row As.
7. Now starting and ending with a block turned 180 degrees, stitch three remaining blocks together as shown to make a single Row B.
8. Stitch the rows together in Row A-B-A fashion as shown in the diagram at right to complete the block. Block should measure 12 1/2" square.



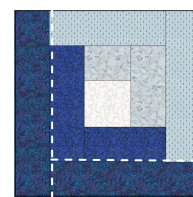
Step 1



Step 2



Step 3



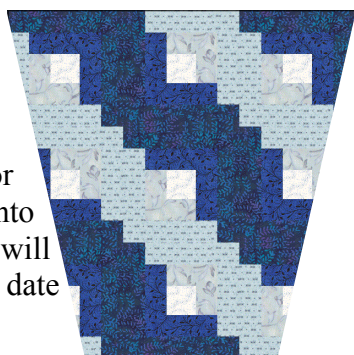
Step 4- Make 9



Row A Make 2



Row B Make 1



*Just FYI:
Instructions for
cutting blocks into
Tumbler Shape* will
be given at a later date

A



B



A



Make Shipping Lanes
Block, turning every other
block 90 degrees to make
this pattern.