

NAUTICAL TUMBLE SAMPLER BLOCK 8 RAILS

From www.LynBrown.com



Cutting:

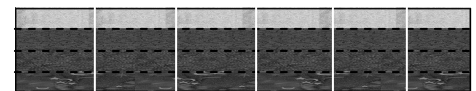
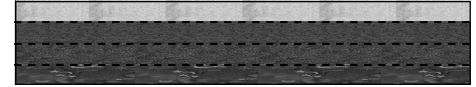
3 fabrics in the Dark range AND

1 fabric in the Medium range

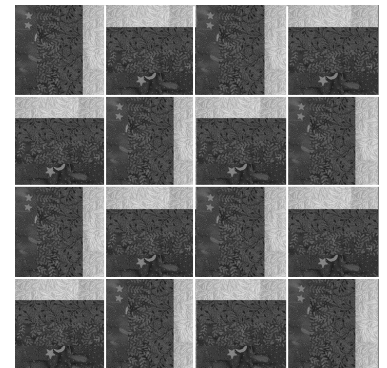
2 strips from each fabric: 1 1/4" X Width Of Fabric

Assembly:

1. Arrange fabrics from medium to dark. Stitch together in that order, making two strip sets of four fabrics.



2. Cut 3 1/2" units from the strip sets. Cut 16 ea. units from the strip sets as shown.



3. Lay out the sixteen units alternating where the medium strip lies (i.e. half the time at the top, half the time on the right) into 4 rows of 4 blocks.

4. Stitch the units together as laid out. Block should measure 12 1/2" square.

We will trim all the blocks to the Tumbler shape when they are all complete. Stay tuned!

