

# Quilters Alphabet Setting Instructions

## Cutting:

From Sashing:

Vertical Sashing: 23 ea. 1 1/2" x 6 1/2"

Horizontal Sashing: 6 ea. 2" x 51 1/2"

Inner Border: Top and Bottom: 2 ea. 2" x 51 1/2"

Binding: 8 ea. 2 1/2" strips Width of Fabric

Sides: 2 ea. 54 1/2" X 1 1/2"

From Background: 4 ea. Spacer Blocks 6" x 6 1/2"

For Borders: (Optional: Use chunks of fabrics left-over from letter and motif appliqué cut into 6 1/2" lengths, each varying from 5" to 7" to make) 2 border strips for top and bottom at 6 1/2" X 53 1/2" and 2 border strips for sides at 6 1/2" X 66 1/2"

## Assembly:

1. Trim all blocks to 6 1/2" with motif centered.

2. Stitch the letter to its representational block. These letters should be on the left hand side: ABCDEFGHIJKPQRSWXYZ

These letters should be on the right hand side: LMNOTUV

LMNOTUV

3. Lay out your rows placing Sashing only between the block pairs.

Row 1: ABCD

Row 2: EFG

Row 3: HIJK

Row 4: LMNO

Row 5: PQRS

Row 6: TUV

Row 7: WXYZ

Note: Row 2 and Row 6 also need Sashing and Spacer Blocks on the left and right sides.

4. Stitch your rows as above.

5. Add Horizontal Sashing to bottom edge of Rows 1-6 only.

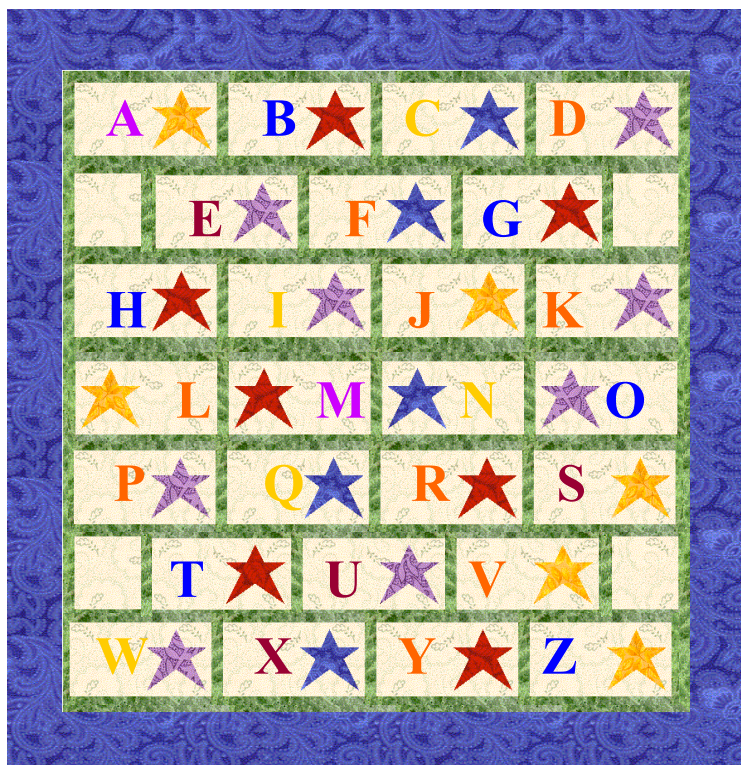
6. Stitch rows together in order.

7. Add inner border, adding top and bottom first then side strips.

8. Add outer border strips in the same way.

9. Layer and quilt as desired.

10. Bind with 2 1/2" strips.



In this Mock Up all individual letter motifs are represented by Stars



Stitch letters to the left or right of their counterparts, as shown



Lay out rows with Sashing between only



Row 2 and Row 6 also need Sashing and Spacer Blocks on the left and right sides



Add Horizontal Sashing to the bottom edge of Rows 1-6 only



Finish with Whole Cloth Borders

Or...



Stitch rows together in order. Add inner border, adding top and bottom first then side strips

Use up your scraps with this Chunky Border

