

# 2013 QUILTING SWAPS

Here are the first few months of swaps.  
Get a yard and a half of each fabric. Whether we cut 10" squares or 2 1/2" strips, it all starts with two each 1 1/2 yard pieces.

## **For January (22-28) we are swapping Grays:**

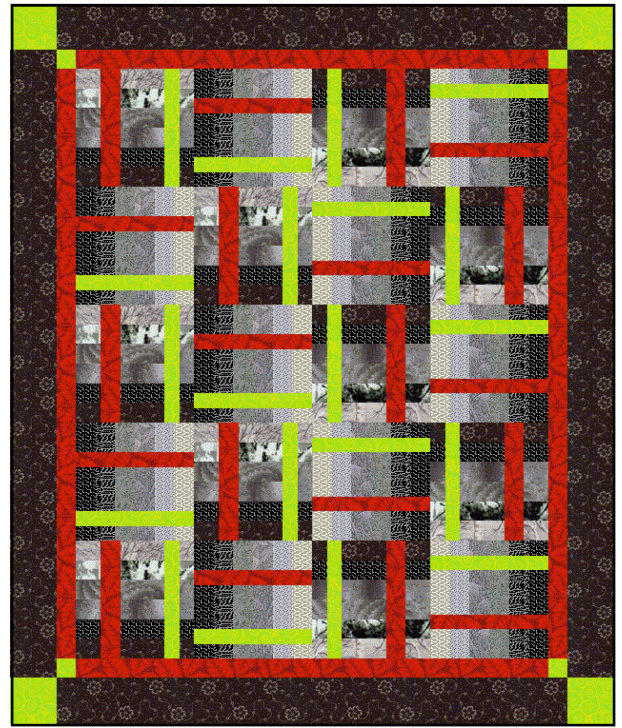
One light Gray and one dark Gray.

Not black or white... nor black and white.

Semi-solid and 80% gray.

**Cutting:** 2 1/2" Width of Fabric strips, 20 ea of light, 20 ea dark gray.

**Project:** Gray Study



## **For February (4-8) it will be 2 Solids.**

One HOT: red, orange, yellow and one COOL: blue, green or purple.

Cutting: 2 1/2" Width of Fabric strips, 20 ea COOL, 20 ea HOT.

**Project:** Amish Weave

## **March (4-8) will be 2 Masculine Flannels: 1 brown or tan and 1 blue or white.**

Cutting: 10" Squares, 20 ea, Brown/Tan, 20 ea. Blue/White ...All Masculine

**Project:** Slow Turning

## **Then April (8-12) will be 2 Stripes: One narrow (1/4" or under) and One wider.**

Cutting 10" Squares, 20 of narrow, 20 of wider

**Project:** Boxes

## **For May (6-10), 2 "Pretty" Plaids with no other limitations other than pretty!**

Cutting: 10" Squares, 20 ea of two pretty plaids

**Project:** Triple Four Patch

## **And for June (3-7): One Beige and One Tan... Looking for Neutrals!**

Cutting: 10" Squares 20 ea Beige, 20 ea. Tan

**Project:** Remix

All 1 1/2 yards... Prewashed, Folded into 20 ea. Swap Sets, put in a zip type plastic bag with your name prominently written upon it. No Selvages allowed on the squares