

# THE iCHART QUILT

61" X 61"

## Supplies:

Red: 1 3/4 Yards

White: 3 1/2 Yards

## Cutting:

Red:

27 ea. 1 1/2" X Width of Fabric (WoF)

7 ea. 2 1/2" X WoF

White:

14 ea. 1 1/2" X WoF

4 ea. 15 1/2" Squares

2 ea. 2 1/2" X 45 1/2" (From Length)

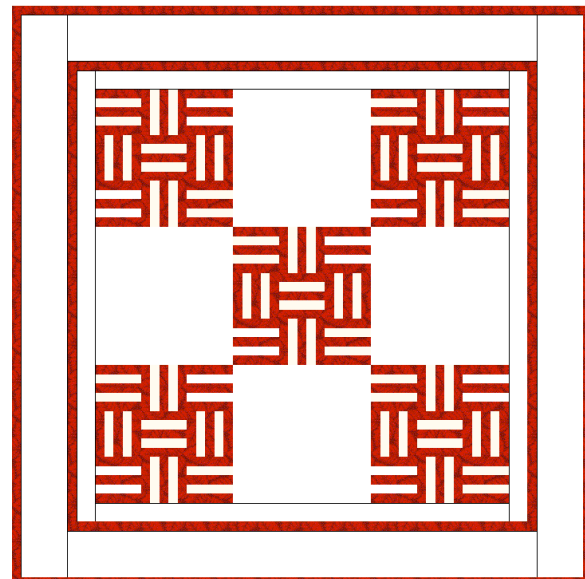
2 ea. 2 1/2" X 49 1/2" (From Length)

2 ea. 5 1/2" X 51 1/2" (From Length)

2 ea. 5 1/2" X 61 1/2" (From Length)

## Assembly:

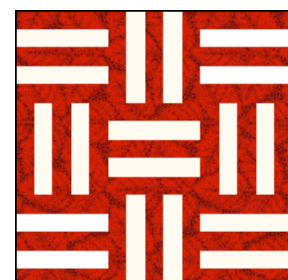
- Strip together 3 Red Strips and 2 White, all 1 1/2" as shown at right. Make 7 Strip Sets. Strip Sets should measure 5 1/2".
- Cut each Strip Set into 7 ea. 5 1/2" Rail Blocks. Make 45 Rail Blocks. Blocks should measure 5 1/2" square.
- Following Diagram at right, assemble an iChart Block using 9 Rail Blocks, watching orientation. Make 5 iChart Blocks. Blocks should measure 15 1/2" square.
- Using the 5 iChart Blocks and the 4 ea. 15 1/2" White squares, put together the Quilt Center as a BIG 9-Patch as shown (3 rows of 3 blocks, alternating Rail and Plain Blocks). Quilt Center to measure 45 1/2".
- Using the 2 1/2" X 45 1/2" and 2 1/2" X 49 1/2" White strips, add Inner Border.



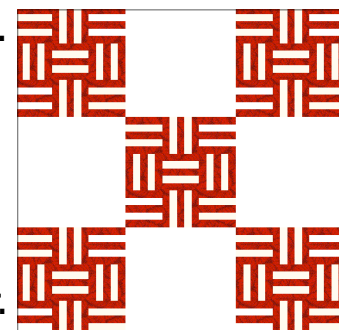
1. Strip together 3 Red Strips and two White, all 1 1/2"



2. Cut into 7 ea. 5 1/2" Rail Blocks. Make 45 Rail Blocks.



3. Lay out 9 Block as shown to make an iChart Block. Make 5 iChart Blocks



4. Using the 5 iChart Blocks and the 4 ea. 15 1/2" White squares, put together the Quilt Center



Inspiration for The iChart Quilt found at a SoCal Flea Market Note that upper right and lower left rails have their colors reversed.

The iChart Quilt is not like this.

6. Using the remaining 1 1/2" Red strips, piece together 2 ea. 49 1/2" Strips and 2 ea. 51 1/2" Strips for use as Middle Border.

7. Using the 5 1/2" X 51 1/2" and 5 1/2" X 61 1/2" White Strips, add Outer Border.

8. Layer with backing and batting. Quilt as desired.

9. Bind with 2 1/2" Red strips. Enjoy!

