

# Rockin' Roll

## Supply List

A New Rail Fence Variation  
Easy to Make. Makes a Lovely Quilt!  
64" X 80"

January 2012 Project

From [www.LynBrown.com](http://www.LynBrown.com)

**1 1/2 Yards**

**2 1/4 Yards**

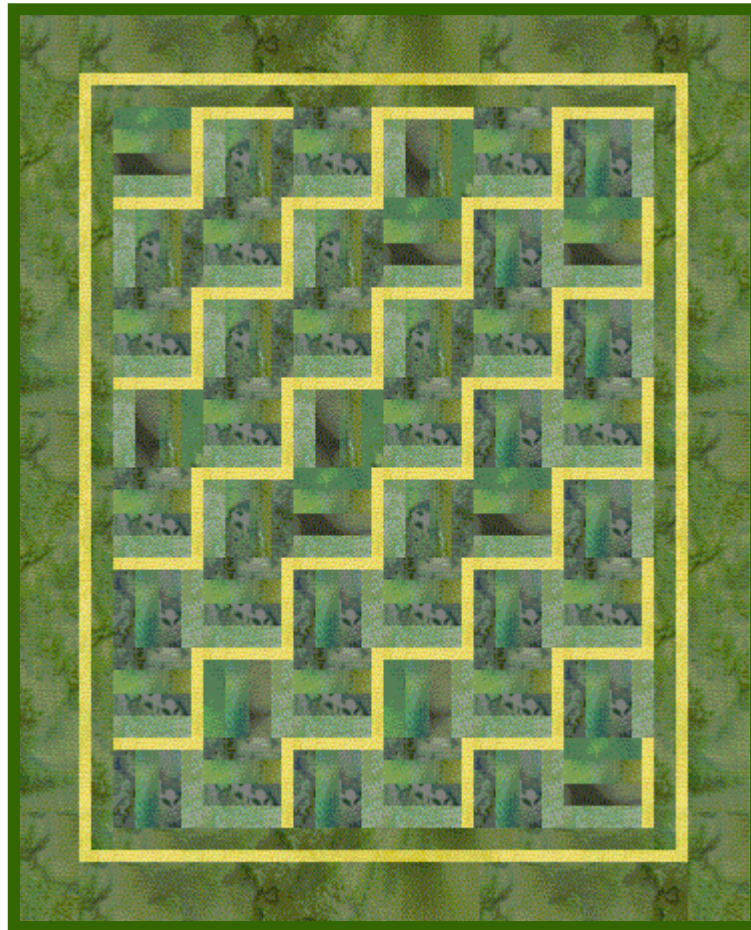
**Jelly Roll, Bali Pop  
Or Equivalent**

**(Including 40 ea. 10" Squares... Think Swap Squares!)**

Accent (Blocks, Border, Binding)

Border

40 Assorted Strips [or more!] 2 1/2" X Width of Fabric



# Rockin' Roll Jelly Roll Quilt

## Part One: Making The Blocks

An Annotated Set of Instructions

### Cutting:

For more info about using the rotary cutter, go to <http://lynbrown.com/how-to-make-a-great-quilt-section-3-rotary-cutting/>

From Accent:

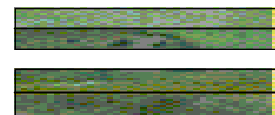
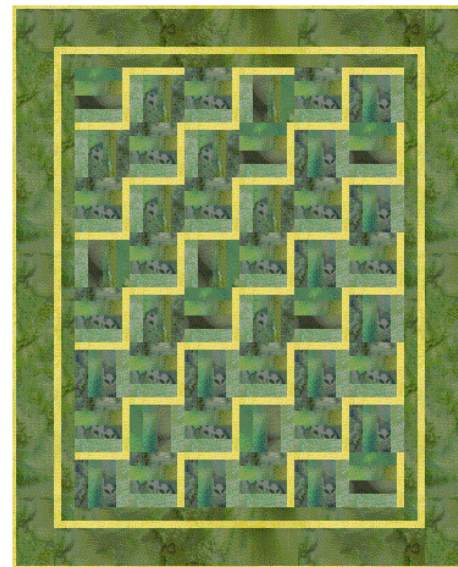
2 ea. 8 1/2" X WoF strips. From these cut:

48 ea. 1 1/2" X 8 1/2" strips

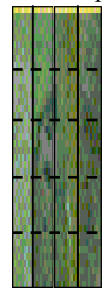
AND

6 ea. 1 1/2" x WoF strips (Inner Border)

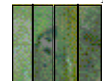
8 ea. 2 1/2" x WoF Strips (Binding)



1/2. Sew Two Strips Together. Repeat.



3. Sew Two Strip Sets Together. Repeat.



4. Cut Into 7 1/2" X 8 1/2" Sections. Repeat For 48.



5. Add Accent Strip.

### Block Assembly from 2 1/2" Strips: ( For 10" Squares, see below...)

1. Choose four strips. Stitch two together along long side. For more info on quarter inch seams go to

<http://lynbrown.com/how-to-make-a-great-quilt-part-4-quarter-inch-seams/>

2. Do the same for the other two strips. Now you have two strip sets of two strips each. Stitch the two strip sets together into a strip set of four strips.

Press all seams to one side. For more info on pressing go to

<http://lynbrown.com/how-to-make-a-great-quilt-section-2/>

Your strip set should measure 8 1/2" wide. If not, you will need to adjust the finished width of your strip set sections.

3. From your 4-strip strip set, cut 5 ea. 7 1/2" (X 8 1/2") sections.

4. Repeat steps 1 through 3 nine more times to have a total of fifty sections (you only need 48)

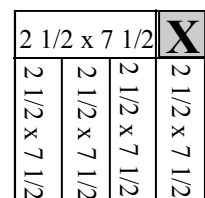
5. Stitch a 1 1/2" x 8 1/2" Accent strip across the top (Or Bottom) of each section as shown at right to make 48 Rockin blocks. Press to the Accent strip.

### Block Assembly from 10" Squares:

1. Following diagram at right, cut each square into 5 ea. 7 1/2" x 2 1/2" strips.

2. Pick 4 strips at random. Do not repeat any fabric. Stitch the four strips together to make a section that is 7 1/2" X 8 1/2". Make 48 sections.

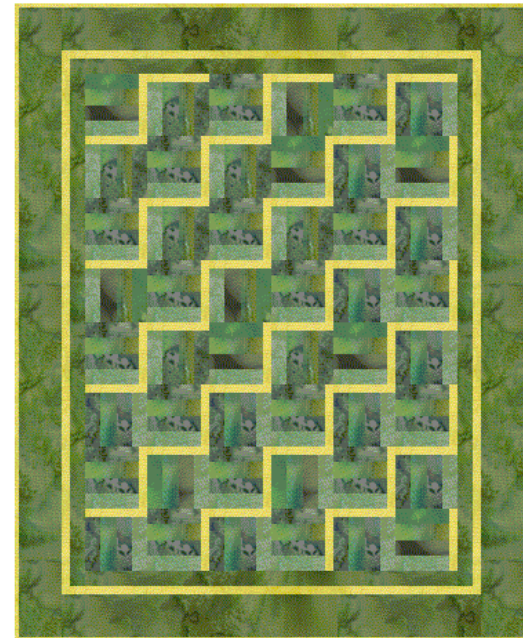
3. Continue to Step 5 above.



*Next: Setting the blocks*

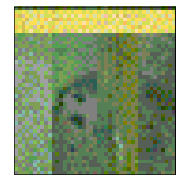
# Rockin' Roll Jelly Roll Quilt

## Part Two: Setting The Blocks

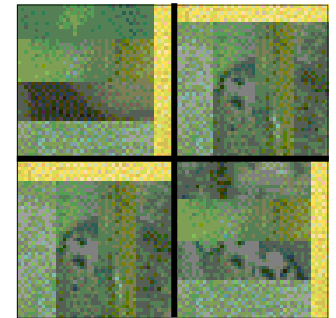


### Setting The Rockin' Blocks Together:

1. Be sure all 48 Rockin' blocks are 8 1/2".
2. Layout 4 blocks as shown below right to form a Great Block. Note that the Accent Strip is always at the Top or on the Right hand side of the block. Consistency is the key. Stitch together, watching orientation. Make 12 Great Blocks all the same. Each should measure 16 1/2".
3. Set Great Blocks together, again watching orientation. Make 4 rows of 3 Great Blocks.
4. Stitch the four rows together form the center of the quilt. And you still need to watch the orientation of each row.



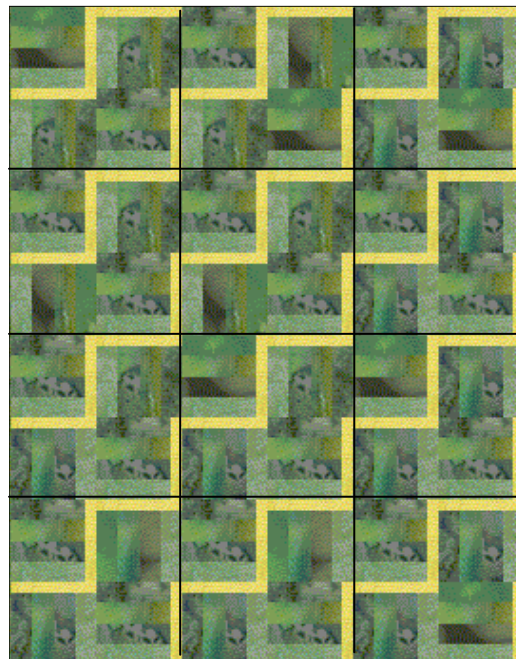
1. 48 ea 8 1/2" blocks



2. 12 ea 16 1/2" Great Blocks



3. Make 4 sets of 3.





# Rockin' Roll

## Jelly Roll Quilt

### Part Three: Adding Borders

The Rockin' Roll quilt has three borders. Each has its purpose. The inner border frames the quilt and separates the accent strips of the blocks from the same accent fabric in the inner border. The final wider border finishes the quilt off in a tailored manner. For more info on adding borders to your quilt, check out <http://lynbrown.com/wp-content/uploads/2010/10/borders-2002.pdf> for the complete Borders Sheet.

#### Cutting:

Border Fabric: (From Length)

4 ea. 2" Length of Fabric Strips

4 ea. 5 1/2" Length of Fabric Strips

#### Assembly:

To determine the true **length** of your borders, measure the quilt center length through its *center*, not at the outer edges. Those outer edges have more “give” and will not give an accurate measure. Measuring through the center will keep your quilt square.

- 1. Trim 2 of the 2” strips to be the center vertical dimension of your quilt. Add these strips to the sides of your quilt, matching and pinning at the centers and quarter points. Press towards the border.*
- 2. After adding the vertical sides, repeat the measure through the Horizontal center of the quilt (including those side borders. Trim the last 2 of the 2” strips to be the center horizontal dimension of your quilt. Add these strips to the top and bottom of your quilt, matching and pinning at the centers and quarter points.*
- 3. Repeat this process of measuring through the centers and adding your borders to the sides then top and bottom for the inner accent border strips cut earlier*
- 4. Repeat the border process a third time to add the outer border strips cut above.*
- 5. Layer and Quilt as desired. Bind with accent strips cut earlier.*

